

Tools for **m**ICRO **m**ACHINING

MILLING TOOLS

Proudly
Made In
INDIA
Since 1989

In-House
PVD Coatings
optimized for
Micro Tools



AXIS+
Cutting Tools with
Super Finishing

Diamond
Coated



*Wide Range
Easy Availability
Application Support
Tools for diverse materials
Now with In-house PVD coating*

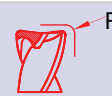
www.axis-microtools.com

Description	Flutes(Z)	Dia Range	Shank Dia	Article	Applications
High Performance End Mills	1	0.10 - 16.00	3.0 / 4.0 / 6.0 / 8.0 10.0 / 12.0 / 16.0	E8231 E9231	End Mills for finish machining of plastic and non-ferrous materials
End Mills Ferrous Materials	2	0.10 - 16.00	3.0 / 4.0 / 6.0 / 8.0 10.0 / 12.0 / 16.0	E9661	End Mills for slotting key ways and other milling works in ferrous alloys
End Mills Non-Ferrous Materials	2	0.10 - 16.00	3.0 / 4.0 / 6.0 / 8.0 10.0 / 12.0 / 16.0	E8311	End Mills for slotting key ways and other milling works in non-ferrous alloys
End Mills Corner Radius	2	0.80 - 16.00	3.0 / 4.0 / 6.0 / 8.0 10.0 / 12.0 / 16.0	E8361 E9301	Milling in ferrous and non-ferrous materials Milling in hardened steel > 50 HRC
End Mills Corner radius Long Approach	2	0.80 - 16.00	3.0 / 4.0 / 6.0 / 8.0 10.0 / 12.0 / 16.0	E9311	Milling in hardened steel > 50 HRC
End Mills Long Approach	2	0.80 - 16.00	3.0 / 4.0 / 6.0 / 8.0 10.0 / 12.0 / 16.0	E8331	Milling in ferrous and non-ferrous materials
End Mill Aluminium Application	2	0.40 - 16.00	3.0 / 4.0 / 6.0 / 8.0 10.0 / 12.0 / 16.0	E8381	End Mills for slotting key ways and other milling work in aluminium Also available in long approach
End Mills Long Approach	3	0.40 - 16.00	4.0 / 6.0 / 8.0 10.0 / 12.0 / 16.0	E1381	High performance, heavy machining with better chip removal in Aluminum
End Mills	3	1.00 - 16.00	3.0 / 4.0 / 6.0 / 8.0 10.0 / 12.0 / 16.0	E9681	End Mills for slotting key ways & other milling works in ferrous and non-ferrous materials
End Mills	4	0.20 - 16.00	3.0 / 4.0 / 6.0 / 8.0 10.0 / 12.0 / 16.0	E9671	End Mills for slotting key ways & other milling works in ferrous and non-ferrous materials
End Mills Corner Radius	4	0.80 - 16.00	3.0 / 4.0 / 6.0 / 8.0 10.0 / 12.0 / 16.0	E9371 E9331	Milling in ferrous and non-ferrous materials Milling in hardened steel > 50 HRC
End Mills Corner radius Long Approach	4	0.80 - 16.00	3.0 / 4.0 / 6.0 / 8.0 10.0 / 12.0 / 16.0	E9321	Milling in hardened steel > 50 HRC
Taper Square End Mills	2	0.20 - 16.00	4.0 / 6.0 / 8.0 10.0 / 12.0 / 16.0	E9501	End Mills for slotting key ways & other milling work in ferrous and non-ferrous materials
Taper Square End Mills	4	0.20 - 16.00	3.0 / 4.0 / 6.0 / 8.0 10.0 / 12.0 / 16.0	E9511	End Mills for slotting key ways & other milling work in ferrous and non-ferrous materials
 End Mill Long Approach	2	0.40 - 16.00	3.0 / 4.0 / 6.0 / 8.0 10.0 / 12.0 / 16.0	E2151	End Mills for milling in Graphite, CFK, GFK
 End Mill Long Approach	3	0.40 - 16.00	3.0 / 4.0 / 6.0 / 8.0 10.0 / 12.0 / 16.0	E2171	End Mills for milling in Graphite, CFK, GFK

ALSO AVAILABLE

- Square End Mills with Staggered Teeth
- Square End Mills with Variable Helix
- Square End Mills with Coolant Holes
- Square End Mills with Steps

Corner Radius
±0.005
On Request





Corner Radius Tol.
±0.010 for R 0.10 - R 1.00
±0.020 for R > 1.00

Coated tools also available

All dimensions are in mm

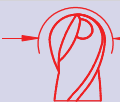
Diameter upto 20.0 mm on request

Description	Flutes(Z)	Dia Range	Shank Dia	Article	Applications
High Performance Ball Nose End Mills	2	0.20 - 6.00	4.0 / 6.0	B8701	Ball Nose for finish contour milling of ferrous and non-ferrous materials
Ball Nose End Mills	2	0.20 - 16.00	3.0 / 4.0 / 6.0 / 8.0 / 10.0 / 12.0 / 16.0	B9701	Ball Nose for contour milling of ferrous and non-ferrous materials
High Performance Ball Nose End Mills Long Approach	2	0.20 - 6.00	4.0 / 6.0	B8751	Ball Nose for finish contour milling in ferrous materials
Ball Nose End Mills Long Approach	2	0.20 - 16.00	3.0 / 4.0 / 6.0 / 8.0 / 10.0 / 12.0 / 16.0	B9751	Ball Nose for contour milling of ferrous and non-ferrous materials
Ball Nose End Mills Aluminium	2	1.00 - 12.00	3.0 / 4.0 / 6.0 / 8.0 / 10.0 / 12.0	B8381	Ball Nose for contour milling in Aluminium application
Ball Nose End Mills	3	0.20 - 16.00	3.0 / 4.0 / 6.0 / 8.0 / 10.0 / 12.0 / 16.0	B9731	Ball Nose for contour milling of ferrous and non-ferrous materials
Ball Nose End Mills Long Approach	3	0.20 - 16.00	3.0 / 4.0 / 6.0 / 8.0 / 10.0 / 12.0 / 16.0	B1731	Ball Nose for contour milling of ferrous and non-ferrous materials
Ball Nose End Mills	4	0.20 - 16.00	3.0 / 4.0 / 6.0 / 8.0 / 10.0 / 12.0 / 16.0	B9721	Ball Nose for contour milling of ferrous and non-ferrous materials
Ball Nose End Mills Long Approach	4	0.20 - 16.00	3.0 / 4.0 / 6.0 / 8.0 / 10.0 / 12.0 / 16.0	B9741	Ball Nose for contour milling of ferrous and non-ferrous materials
Lollipop Cutter 270° Spherical Ball	2 4	0.50 - 16.00	3.0 / 4.0 / 6.0 / 8.0 / 10.0 / 12.0 / 16.0	B9901 B1721	For milling in ferrous and non ferrous alloys Suitable for undercutting, deburing, and multi axis machining
Ball Nose End Mills Long Approach	2	0.20 - 6.00	3.0 / 4.0 / 6.0	B9791	Ball Nose for contour milling of ferrous and non-ferrous materials
Ball Nose End Mills Copper Electrodes	2	0.20 - 2.00	6.0	B9831	Ball nose for copper and copper alloys
Taper Ball Nose End Mills	2	0.60 - 16.00	3.0 / 4.0 / 6.0 / 8.0 / 10.0 / 12.0 / 16.0	B9531	Ball Nose for contour milling of ferrous and non-ferrous materials
Taper Ball Nose End Mills	4	0.60 - 16.00	3.0 / 4.0 / 6.0 / 8.0 / 10.0 / 12.0 / 16.0	B9521	Ball Nose for contour milling of ferrous and non-ferrous materials
 Ball Nose End Mills Long Approach	2	0.20 - 12.00	3.0 / 4.0 / 6.0 / 8.0 / 10.0 / 12.0	B2001	Ball Nose for milling in Graphite, CFK, GFK
 Ball Nose End Mills Long Approach	3	0.20 - 12.00	3.0 / 4.0 / 6.0 / 8.0 / 10.0 / 12.0	B2011	Ball Nose for milling in Graphite, CFK, GFK

ALSO AVAILABLE

- Ball Nose End Mills with Staggered teeth
- Ball Nose End Mills with Variable Helix
- Single Flute Ball Nose End Mills

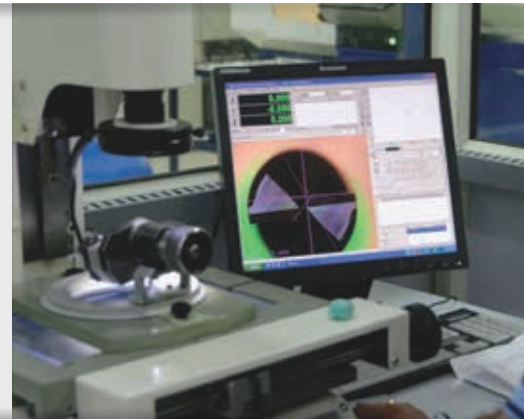
**Ball Line Form
±0.001
On Request**


Ball Radius Tol.
 ±0.002 for R 0.10-R 1.50
 ±0.005 for R 2.00-R 8.00
 On demand ± 0.0015mm



Super Finishing Endmills





AXIS EUROPE GmbH

Josef-Bayer Straße 3 Weingarten D 88250 Germany
☎ +49 751 560 1589 407 ✉ info@axis-europe.eu
🌐 www.axis-europe.eu



IND - SPHINX PRECISION LTD (Unit B)

1 Taksal Road Parwanoo - Kasauli Marg Parwanoo
Himachal Pradesh India 173220
☎ +91 1792 234460 / 232860
✉ info@axis-microtools.com 🌐 www.axis-microtools.com

AXIS[®]
Tools for **mi**CRO **ma**CHINING

QUALITY • PRECISION • CONSISTENCY

